



Socorro SWCD

Winter Newsletter Fy26



Winter is here !

Here are some tips on how to properly winterize drip systems and water lines

Shut Off Water: Locate the irrigation water supply valve (often near the meter or in the basement) and turn it off.

Drain Main Lines: Open manual drain valves or the drain cap on the stop-and-waste valve to let water out of the main pipe.

Drain Backflow Preventer: Open the test cocks on the backflow device to drain water from it; some also have a bleeder valve.

Blow Out Zones (Air Compressor Method):

Connect an air compressor to the blowout port (usually near the backflow).

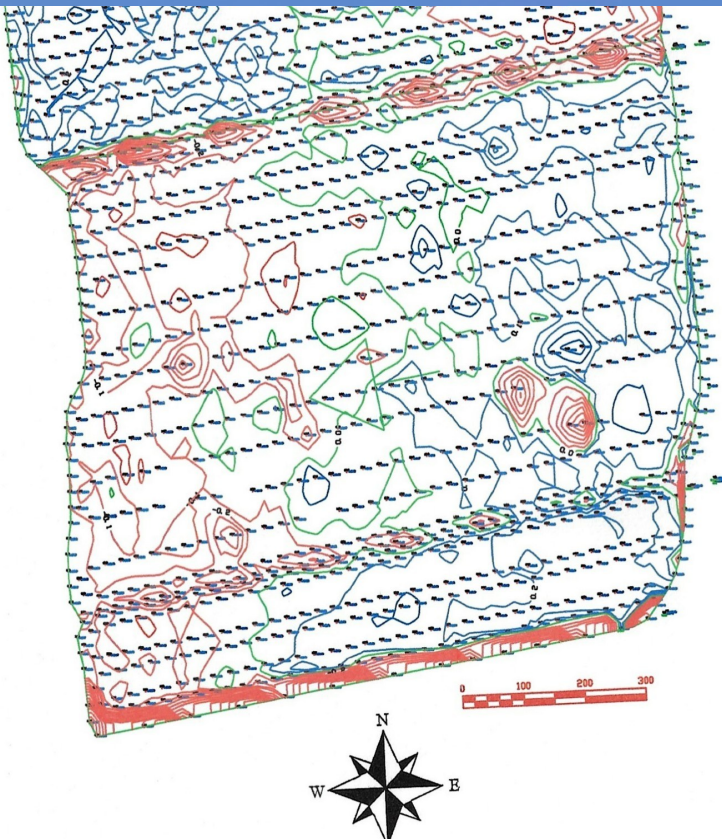
Set regulator to 40-60 PSI to prevent damage.

Turn on each zone (via controller or manually) one by one for about a minute until it is completely drained.

Close Valves: Close all zone valves and manual valves, leaving them at a 45-degree angle or in the off position as needed for drainage.

Insulate: Insulate any exposed pipes or backflow devices





Does it take over an hour per acre to flood irrigate your field? Contact our office for a free elevation survey to determine if you can benefit from laser leveling.

With our Agricultural Cost share program our maximum cost share reimbursement is up to 6,000 dollars. Improve your fields and we'll split the cost with you!

Socorro SWCD design services

Laser Leveling	Irrigation Pipeline
Concrete ditch	Ranch Watering Systems
Elevation surveys	



Upcoming Important Dates

January 2026

1st-New Year's Day (Office Closed)

13th-Board Meeting

19th-Martin Luther King Jr Day (Office Closed)

February

10th-Board Meeting

16th- Presidents Day (Office Closed)

March

10th-Board Meeting

April

14th-Board Meeting

**HAPPY
NEW YEAR**